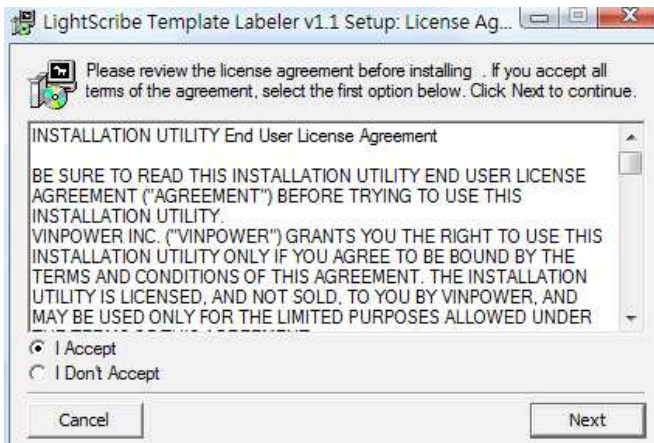


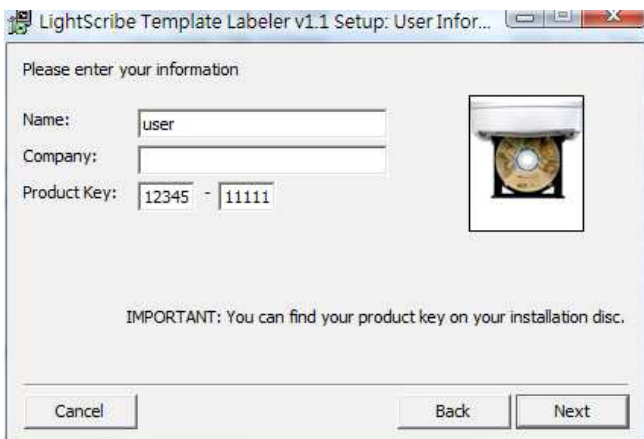
## **\*Section 1: Installing the Lightscribe Template Labeler Software**

**\*\*Note: Images displayed represent examples and are not intended as literal selections.\*\***

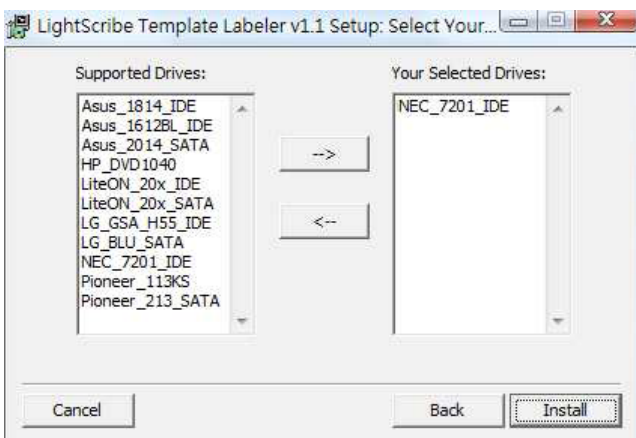
- Place the setup disk in the computer drive
- Double click on the drive letter consistent to the disk inserted.
- Double click on the Setup file (example: Syster\_LightScribe\_Setup\_IDESelected\_v25\_fortower.exe)
- Select Agree/ Accept and select "Next" if applicable to start the installation process.



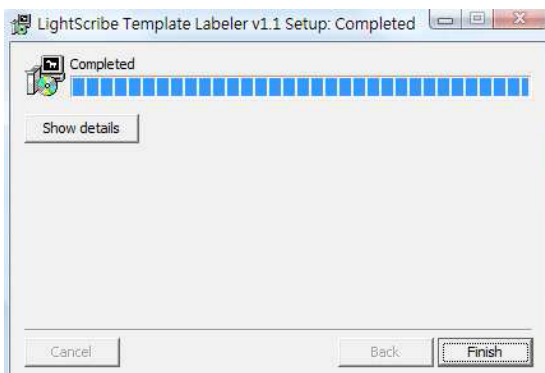
- Enter the Product key, and click next.



- You will be asked to select a drive model.



- You will need to select the model that is currently installed in the duplicator.
- To find out the drive model installed turn on the duplicator.
- Scroll down to the "Utility" function using the up/down arrow keys and press Ent.
- Then scroll down to "Device Info" and press Ent.
- (\*\*For the 1-1 units scroll down once to view the device info on the bottom line. )
- (\*\*For all other units scroll down twice and view the bottom line.)
- Click and highlight the drive consistent to the drive viewed on the duplicator display and send it from the left column (supported drives) to the right column (selected drives) by clicking the right arrow key.
- All other drive models should be sent to the left column (supported drives).
- Highlight the unwanted drives one at a time and click the left arrow key.
- Once selected, click install.
- Click next, continue, etc. until finished.



You will need to install the **LightScribe System Software** as well as the **LightScribe Template Labeler**. The **LightScribe Template Labeler** installation will open once the **LightScribe System Software** has been completed.

**\*\*NOT ALL IMAGES DISPLAYED WILL BE EXACT TO THE DUPLICATOR COSMETICS\*\***

## **Design and Printing Labels**

The instructions covered in this section will help you design and print a label from your LightScribe Standalone Duplication system.

**Please note that you must install the supplied LightScribe software in order to proceed with the instructions below. If you have any difficulties installing the software, please contact Tech Support for assistance.**

**\*\*\*Following these instructions will assist in creating the necessary .lsl data file needed for the duplicator to print to all of the potential lightscribe drives installed. The Lsl data file is the only file the duplicator will access. The .LSL project file will not be recognized by the duplicator because it is an exclusive computer application.\*\*\***

## **\*Section 2: Design your labels with LightScribe Template Labeler and create a LightScribe Label CD**

### **Step 1: Launch the *LightScribe Template Labeler***

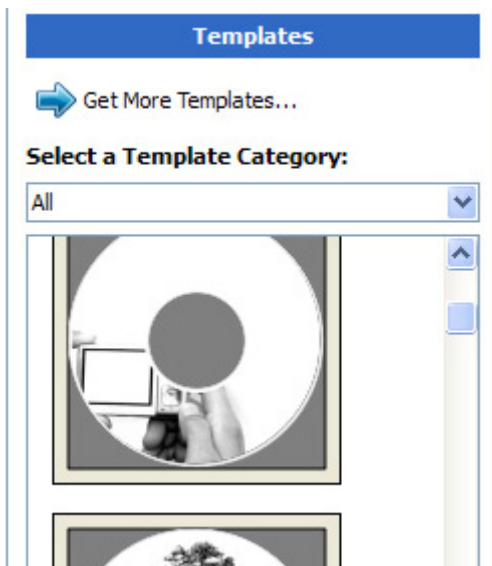
\* By clicking the shortcut icon on your desktop.

\* Or you can find the program launch shortcut in **Start > All Programs > LightScribe Direct Disc Labeling > LightScribe Template Labeler**.

*Since we use this software for design and layout purpose, please ignore the "LightScribe Disc Insertion" prompt below by pressing the OK button.*



### **Step 2: Select Template**



\* Choose one of the preinstalled templates, or click on "Get More Templates" to download additional templates.

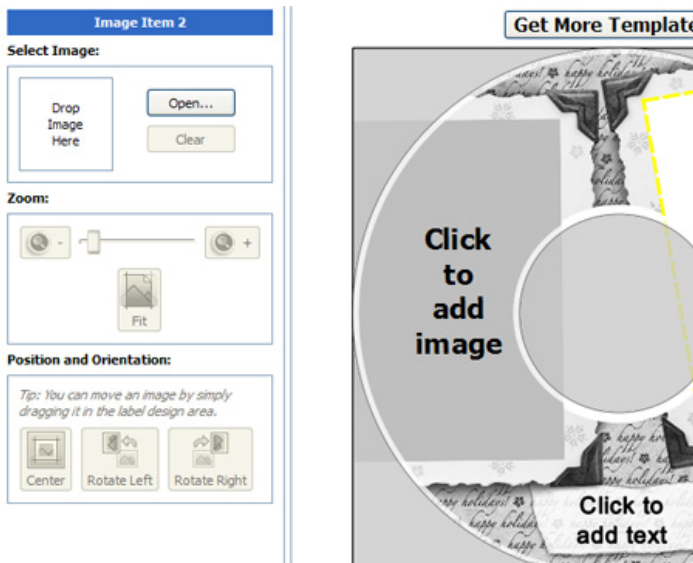
\* Select the Category filter function to better view and choose a template. Note that each template may appear in multiple categories.

\* Click on your Template choice to activate.

**If you prefer more advanced design capabilities instead of the pre-designed templates, you can do following:**

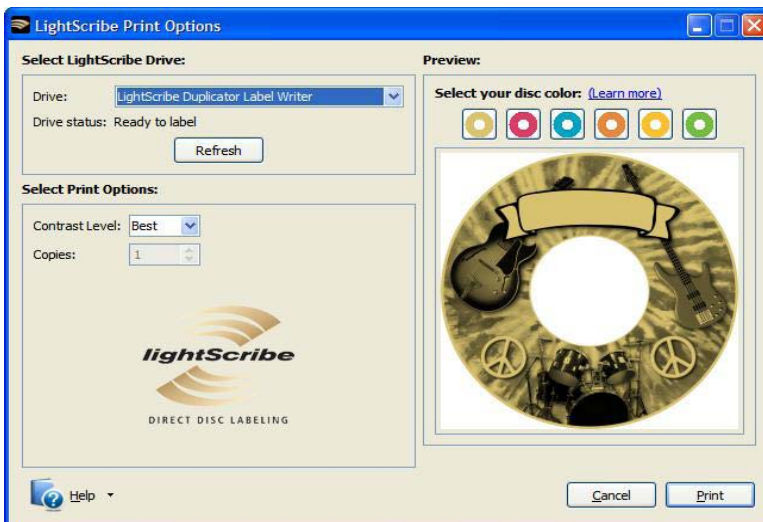
- a. Design your own CD label artwork using a more advance design software like Adobe PhotoShop
- b. Export your completed CD artwork as a picture format like bmp, jpeg, png, .jpg, or .jpe.
- c. Choose the empty template from the Template Labeler and add the exported CD artwork pictures into the empty template.

### **Step 3: Insert Text and/or Pictures**



- \* Depending on the template chosen, you may have the option to modify text box(s) or picture(s).
- \* For inserting pictures, just click on the dedicated area to select the picture you'd like to use.
- \* Use the Zoom button or the scroll wheel of your mouse to size the picture, and then drag it to position where you want it within the selection window.
- \* For text, just click on the text field, and then type the text you'd like to appear within the text field. Note you can enter multiple lines of text depending on the template chosen.

### **Step 4: Preview and Print Label**



**Step 5: Click on "Preview and Print" to bring up the print window.**

- \* Select the "LightScribe Duplicator Label Writer" as the LightScribe Drive.
- \* Select the "Best" contrast mode for the darkest print.
- \* For a lighter quicker print select Normal or Draft (fastest)
- \* Select the label surface color of the disc you wish to label onto.
- \* **If you are satisfied with the preview, click "Print" to begin generating the Duplicator Label file (.Isi files).**

***You will be asked for the location & the name of the label file you wish to generate.***

*In addition, due to the system display limitation, make sure the file name does not contain any foreign characters other than 26 Greek alphabets, numerical digits, and/or some basic symbols like "-", etc.*

***\*\*\*Important Note: Before clicking the final save button make sure you are fully aware of where the data file is being created, otherwise locating the newly created data file may be difficult\*\*\****

***\*\*If the computer reports a "Critical Internal Error", most likely the program is being blocked by the computer\*\**** This has been known to occur using Windows Vista computer systems. Close the program completely. Once closed, right click on the "Lightscribe" icon (Template Labeler). A scroll down menu will open. Select the "Run As" option, then select "Run as Administrator", if asked select "Allow". Follow steps 1-5 again. The "Internal Error" shouldn't come up again.

**Step 6: Create a Label CD**

- \* **Locate the label file(s) (.Isi files) on your PC.**
- \* **Confirm that the data file you are writing is in fact a .Isi file. (.LSL files will NOT work)**
- \* **Burn a Data CD with the label file(s) via CD/DVD Burning Software; like Nero Burning-ROM, Roxio Classic CD Creator, Windows Writing wizard etc.**

**Example: Windows XP Windows Writing Wizard**

Create the file to the desktop on your computer or (preferred location).  
Right click on the icon, select send to and select the cd drive.  
A bubble may appear on the bottom right that says you have files waiting to be written to a cd.  
Click on the bubble, that should open the a window with the file. On the left column select write these files to a cd.  
The Windows Writing Wizard should open, click next, yes finish. etc.

**Example: VISTA Windows Writing Wizard**

Right click on the icon, select send to and select the cd drive.  
You will see a box open that reads "Prepare this blank disk"  
On the left corner click on "Show formatting options"  
Select the Mastered option, then click next.  
On the top of the browser box, click on the redish circle.  
Click next, etc. to burn.

(Make sure to copy as a data cd. Make sure to finalize the disk. (no multi-session, no drag-to-disk, no DLA don't allow files to be added later) From there, place the cd in the reader.

**Do NOT use the "drag to disk" burn method.**

**Do NOT place label file(s) under any directory/folder of the Label CD.**

**Make sure the cd with the label file(s) has been finalized.**

**Failure to do so will result in the label file(s) not being recognized by your system.**

**\*Section 3: Print copies of your LightScribe label with the LightScribe Label CD you've created.**

**Using LightScribe Duplicator to make copies of your disc label**

Power On the LightScribe Duplicator

**\*\*Place the Data CD that contains the label files you wish to copy into the 1st (Top) Tray.**



**\*\*Place all LightScribe media, with printing surface facing down, into the remaining writer trays.**



**Step 1:** Use the up or down arrow button to navigate to the Print menu:



## **DUPLICATOR 2.29**

### **2.Print**

**Step 2:** Press the “ENT”/Enter button to enter the Print menu. You should then see the Counter feature screen.

**Counter:**

**No Counter**

The Counter feature will let you choose how many copies you want to print for your project. It allows the system to count the number of copies you’ve made and prompt you when the desired number of copies has been made for this job.

*The Counter feature is for your convenience only, and will allow you to make more copies than the previously desired amount, if so required.*

You can choose not to input your desired number of copies if you prefer to print continuously with no interruption. (It will still count the number of copies you’ve made for this job, but it will not notify you when to stop.) To do so, simply press “ENT”/Enter button when you see the “No Counter” on the 2<sup>nd</sup> line of the screen below:

**Counter:**

**No Counter**

Or, you can choose to enter the desired number of copies for this job by following the simple procedure below:

a) Press the up or down button to the following screen:

**Counter:**

**Specify Counter**

b) Then press the “ENT”/Enter button to submit, and you should see the following Specify Counter screen:

**Specify Counter:**

[       ] OK?

c) Please refer to the “Input Name and Number” section of “Chapter 2: Getting to know your System” to enter the desired amount. Then press “ENT”/Enter to continue next step.

**Step 3:** Once the Counter selection is submitted, you shall see the following Preparation screen and the corresponding trays not loaded with discs will automatically eject:

### **Preparing Waiting for Master**

*If above screens is displayed for more than 2 minutes after you have inserted your master disc or blank discs, please check them for quality*

**Step 4:** After you've placed your label disc and LightScribe printable disc(s) in the system's writer drives (label side face down), please allow 5-10 seconds for the system to detect the label disc. After they have been recognized, then you shall see the following screen:

### **Please Select Label 1.[SampleLabel.lsi]**

Please press the UP or DOWN button to select the desired label you wish to print and press the "ENT"/Enter button to confirm your selection.

**Step 5:** After you've selected the desired label file, the system will try to detect the LightScribe printable disc(s) in the drives. Please allow 5-10 seconds for the system to detect them. After they have been recognized, then you shall see the following screen:

### **Preparing 7 Disc Detected, Go?**

\* The "7" indicates there are seven LightScribe printable discs recognized by the Writer. Actual quantity may be different depending on your machine.

By default, the "Auto Start" setting is set to "Auto". Therefore, if your system is not completely filled with LightScribe printable discs and there is no activity within 30 seconds, or if all writers are filled and the system detects this, the system will start automatically.

Once the number of LightScribe printable discs you inserted matches the number of discs detected on the screen, press "ENT"/Enter (if you are not using Auto Start or wish to speed up the process) to confirm, and the following Processing screen will appear.

### **Processing... Please Wait**

If the number of LightScribe printable discs you inserted does not match the number of discs detected on the screen, please allow 15-30 seconds for the system to recognize all of your LightScribe printable discs.

**Step 6:** After 2 or 3 seconds of processing time, one of the following Printing progress screens will appear. The left-hand screen is shown when "Specify Counter" is selected and the right-hand screen is shown when "No Counter" is selected.

“Specify Counter”

“No Counter”

**Printing...**

**0/21            10%**

\* 0/21 indicates you have a project size of twenty-one prints and you have printed zero discs thus far.  
\* 10% indicates the current percentage of the printing progress.

**Printing...**

**0                    10%**

\* 0 indicates you have printed zero discs thus far.  
\* 10% indicates the current percentage of the printing progress.

It is normal to see the progress indicator stay at 0% and 100% for approximately 5 minutes. That is caused by the initializing and finalizing stage.

**Step 7:** Once the printing run is completed, the successful printed copies will be ejected and you shall see the following screen.

**PASS 7 FAIL 0( 7)**

**Please insert Label Disc**

\* PASS 7” indicates that you’ve just printed 7 successful discs.  
\* FAIL 0” indicates that you have no failure in this run.  
\* 7” indicates that you’ve successfully printed 7 discs so far.

**Step 8:** Remove the successful copies and refill the trays with additional LightScribe printable discs to continue printing more copies. You can also press the “ESC”/Escape button to terminate your project and go back to the main menu.

If you’ve specified a counter value for your project and your project is completed, you shall see the following screen:

**Pass 21 Fail 0**

**Job Completed! Press OK to Finish**

You can then press the “ENT”/Enter to go back to main menu.

If you happen to have any failed discs (bad print), the failed disc(s) will not be ejected automatically. You need to manually eject them and you can re-use them in the next run, however, the re-print will make your copies looks darker than your original design.

## \*\*\*Trouble Shooting Error Codes \*\*\*

### Computer message “Critical Internal error”

This has been known to occur using Windows Vista computer systems.

**Solution:** Close the program completely. Once closed, right click on the “Lightscribe” icon (Template Labeler). A scroll down menu will open. Select the “Run As” option, then select “Run as Administrator”, if asked select “Allow”. Follow steps 1-5 again. The “Internal Error” shouldn’t come up again.

### Duplicator Message “LS Config Error”

This message appears when the drive selected when installing the Template Labeler software doesn’t match the drive model installed in the duplicator.

**Solution:** Reinstall the program. Follow **Section 1** closely be sure to select the correct model when installing the software.

### Duplicator Message “File System Not Supported”

Three possible reasons for this message.

- 1)** The file located on the cd is not an .lsi file. Place the cd you created back in the computer. Double click on the drive with the disk inside. Find the file, right click on the file, scroll to properties and left click. Check the file type. If its .lsl (.LSL) then it’s the wrong file be sure to locate the correct .lsi and write that file to a cd.
- 2)** The disk might not be finalized. Make sure to copy as a data cd. Make sure to finalize the disk. (no multi-session, no drag-to-disk, no DLA, don’t allow files to be added later)

#### Example: Windows XP **Windows Writing Wizard**

Create the file to the desktop on your computer or (preferred location).

Right click on the icon, select send to and select the cd drive.

A bubble may appear on the bottom right that says you have files waiting to be written to a cd.

Click on the bubble, that should open the a window with the file. On the left column select write these files to a cd.

The Windows Writing Wizard should open, click next, yes finish. etc.

#### Example: VISTA **Windows Writing Wizard**

Right click on the icon, select send to and select the cd drive.

You will see a box open that reads "Prepare this blank disk"

On the left corner click on "Show formatting options"

Select the Mastered option, then click next.

On the top of the browser box, click on the redish circle.

Click next, etc. to burn.

- 3)** If a dvd is used for the .lsi disk it may also cause that message. **Solution:** Use a cd to write the .lsi info.